

THIS DRAWING AND DESIGN REMAINS THE PROPERTY OF, AND MAY NOT BE REPRODUCED OR ALTERED, WITHOUT THE WRITTEN PERMISSION OF HARRISON GRIERSON CONSULTANTS LIMITED. NO LIABILITY SHALL BE ACCEPTED FOR UNAUTHORISED USE OF THIS DRAWING.

- NOTES:**
- WORKS HAVE BEEN CARRIED OUT IN ACCORDANCE WITH RC 16780.
 - ORIGIN OF LEVELS FOR SURVEY: TCC BM 1023 (BM 1023 DP 419065) RL=51.005 MOTURIKI DATUM.
 - ALL 100mmØ WATERMANS ARE PE100 SDR13.6 PN12.5.
 - ALL 50mmØ RIDERMAINS ARE PE80 SDR11 PN12.5.
 - ALL LOTS HAVE INDIVIDUAL WATER METERS INSTALLED COMPLETE WITH BACKFLOW PREVENTION MANIFOLDS.
 - ALL LOT CONNECTIONS ARE 20mmØ PE100 PIPE.
 - PLEASE REFER TO ELECTRONIC AS BUILTS FOR FURTHER INFORMATION.

LEGEND

- WATERMAIN
- - - EXISTING WATERMAIN
- ⊘ SLUTICE VALVE
- ⊙ GATE VALVE
- ⊞ FIRE HYDRANT
- ⊞ WATER METER

WATER METER SCHEDULE

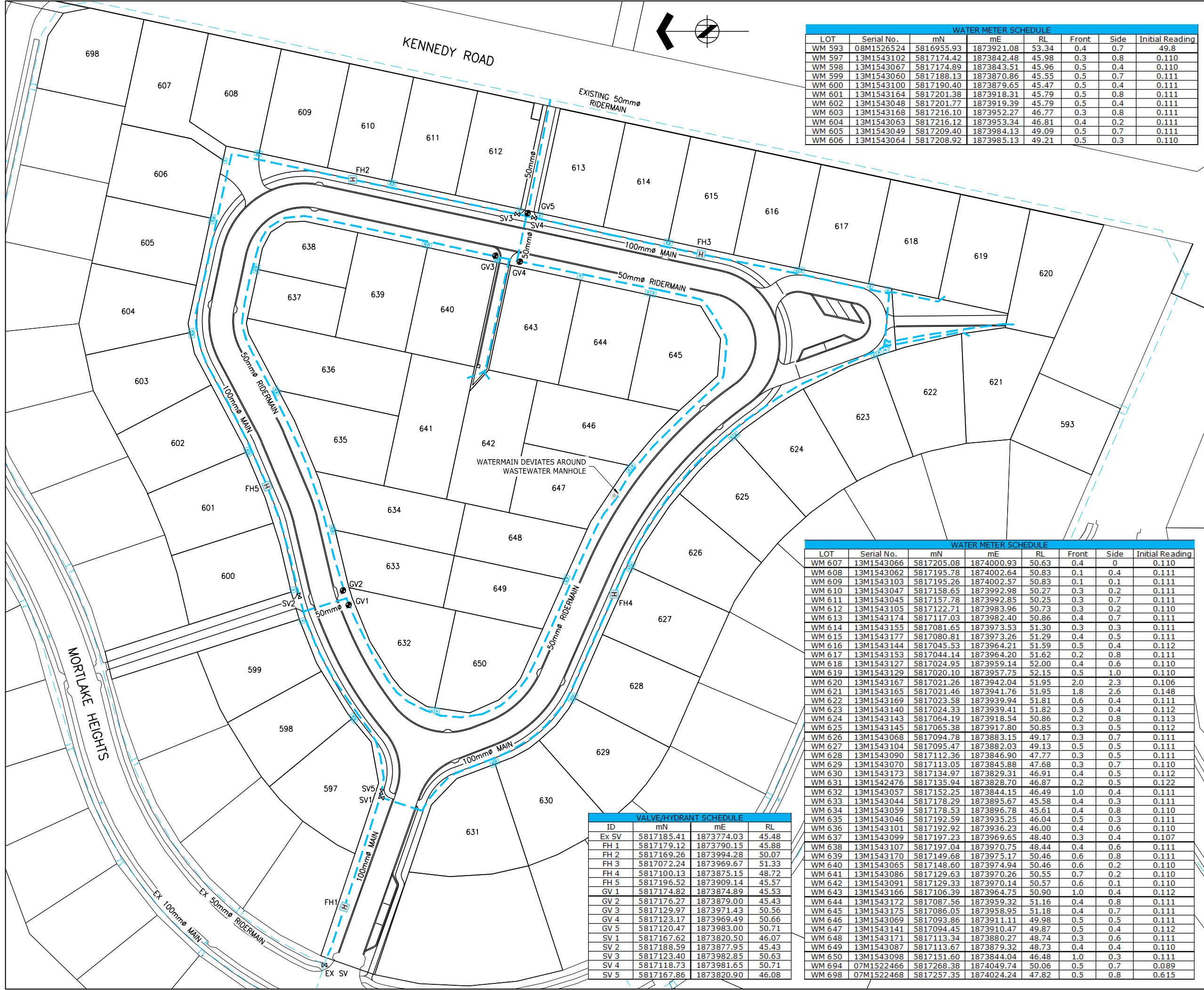
LOT	Serial No.	mN	mE	RL	Front	Side	Initial Reading
WM 593	08M1526524	5816955.93	1873921.08	53.34	0.4	0.7	49.8
WM 597	13M1543102	5817174.42	1873842.48	45.98	0.3	0.8	0.110
WM 598	13M1543067	5817174.89	1873843.51	45.96	0.5	0.4	0.110
WM 599	13M1543060	5817188.13	1873870.86	45.55	0.5	0.7	0.111
WM 600	13M1543100	5817190.40	1873879.65	45.47	0.5	0.4	0.111
WM 601	13M1543164	5817201.38	1873918.31	45.79	0.5	0.8	0.111
WM 602	13M1543048	5817201.77	1873919.39	45.79	0.5	0.4	0.111
WM 603	13M1543168	5817216.10	1873952.27	46.77	0.3	0.8	0.111
WM 604	13M1543063	5817216.12	1873953.34	46.81	0.4	0.2	0.111
WM 605	13M1543049	5817209.40	1873984.13	49.09	0.5	0.7	0.111
WM 606	13M1543064	5817208.92	1873985.13	49.21	0.5	0.3	0.110

WATER METER SCHEDULE

LOT	Serial No.	mN	mE	RL	Front	Side	Initial Reading
WM 607	13M1543066	5817205.08	1874000.93	50.63	0.4	0	0.110
WM 608	13M1543062	5817195.78	1874002.64	50.83	0.1	0.4	0.111
WM 609	13M1543103	5817195.26	1874002.57	50.83	0.1	0.1	0.111
WM 610	13M1543047	5817158.65	1873992.98	50.27	0.3	0.2	0.111
WM 611	13M1543045	5817157.78	1873992.85	50.25	0.3	0.7	0.111
WM 612	13M1543105	5817122.71	1873983.96	50.73	0.3	0.2	0.110
WM 613	13M1543174	5817117.03	1873982.40	50.86	0.4	0.7	0.111
WM 614	13M1543155	5817081.65	1873973.53	51.30	0.3	0.3	0.111
WM 615	13M1543177	5817080.81	1873973.26	51.29	0.4	0.5	0.111
WM 616	13M1543144	5817045.53	1873964.21	51.59	0.5	0.4	0.112
WM 617	13M1543153	5817044.14	1873964.20	51.62	0.2	0.8	0.111
WM 618	13M1543127	5817024.95	1873959.14	52.00	0.4	0.6	0.110
WM 619	13M1543129	5817020.10	1873957.75	52.15	0.5	1.0	0.110
WM 620	13M1543167	5817021.26	1873942.04	51.95	2.0	2.3	0.106
WM 621	13M1543165	5817021.46	1873941.76	51.95	1.8	2.6	0.148
WM 622	13M1543169	5817023.58	1873939.94	51.81	0.6	0.4	0.111
WM 623	13M1543140	5817024.33	1873939.41	51.82	0.3	0.4	0.112
WM 624	13M1543143	5817064.19	1873918.54	50.86	0.2	0.8	0.113
WM 625	13M1543145	5817065.38	1873917.80	50.85	0.3	0.5	0.112
WM 626	13M1543068	5817094.78	1873883.15	49.17	0.3	0.7	0.111
WM 627	13M1543104	5817095.47	1873882.03	49.13	0.5	0.5	0.111
WM 628	13M1543090	5817112.36	1873846.90	47.77	0.3	0.5	0.111
WM 629	13M1543070	5817113.05	1873845.88	47.68	0.3	0.7	0.110
WM 630	13M1543173	5817134.97	1873829.31	46.91	0.4	0.5	0.112
WM 631	13M1542476	5817135.94	1873828.70	46.87	0.2	0.5	0.122
WM 632	13M1543057	5817152.25	1873844.15	46.49	1.0	0.4	0.111
WM 633	13M1543044	5817178.29	1873895.67	45.58	0.4	0.3	0.111
WM 634	13M1543059	5817178.53	1873896.78	45.61	0.4	0.8	0.110
WM 635	13M1543046	5817192.59	1873935.25	46.04	0.5	0.3	0.111
WM 636	13M1543101	5817192.92	1873936.23	46.00	0.4	0.6	0.110
WM 637	13M1543099	5817197.23	1873969.65	48.40	0.3	0.4	0.107
WM 638	13M1543107	5817197.04	1873970.75	48.44	0.4	0.6	0.111
WM 639	13M1543170	5817149.68	1873975.17	50.46	0.6	0.8	0.111
WM 640	13M1543065	5817148.60	1873974.94	50.46	0.6	0.2	0.110
WM 641	13M1543086	5817129.63	1873970.26	50.55	0.7	0.2	0.110
WM 642	13M1543091	5817129.33	1873970.14	50.57	0.6	0.1	0.110
WM 643	13M1543166	5817106.39	1873964.75	50.90	1.0	0.4	0.112
WM 644	13M1543172	5817087.56	1873959.32	51.16	0.4	0.8	0.111
WM 645	13M1543175	5817086.05	1873958.95	51.18	0.4	0.7	0.111
WM 646	13M1543069	5817093.86	1873911.11	49.98	0.5	0.5	0.111
WM 647	13M1543141	5817094.45	1873910.47	49.87	0.5	0.4	0.112
WM 648	13M1543171	5817113.34	1873880.27	48.74	0.3	0.6	0.111
WM 649	13M1543087	5817113.67	1873879.32	48.73	0.4	0.4	0.110
WM 650	13M1543098	5817151.60	1873844.04	46.48	1.0	0.3	0.111
WM 694	07M1522466	5817268.38	1874049.74	50.06	0.5	0.7	0.089
WM 698	07M1522468	5817257.35	1874024.24	47.82	0.5	0.8	0.615

VALVE/HYDRANT SCHEDULE

ID	mN	mE	RL
Ex SV	5817185.41	1873774.03	45.48
FH 1	5817179.12	1873790.15	45.88
FH 2	5817169.26	1873994.28	50.07
FH 3	5817072.24	1873969.67	51.33
FH 4	5817100.13	1873875.15	48.72
FH 5	5817196.52	1873909.14	45.57
GV 1	5817174.82	1873874.89	45.53
GV 2	5817176.27	1873879.00	45.43
GV 3	5817129.97	1873971.43	50.56
GV 4	5817123.17	1873969.49	50.66
GV 5	5817120.47	1873983.00	50.71
SV 1	5817167.62	1873820.50	46.07
SV 2	5817188.59	1873877.95	45.43
SV 3	5817123.40	1873982.85	50.63
SV 4	5817118.73	1873981.65	50.71
SV 5	5817167.86	1873820.90	46.08



HARRISON GRIERSON
Tauranga Office
Level 1 Harrison Grierson House
141 Cameron Road Tauranga 3110
P +64 7 578 0023
www.harrisongrierson.com

A	AS-BUILT	GPR	09.04.13
REF	REVISIONS	BY	DATE

PROJECT: **THE LAKES (2012) LTD TAURANGA**

TITLE: **STAGE 2K WATER RETICULATION AS-BUILT PLAN**

ORIGINATOR:	DATE:	SIGNED:	PLOT BY:
RCH	26.03.13		HJD
DRAWN:	DATE:	SIGNED:	PLOT DATE:
HJD	26.03.13		09.04.13
CHECKED:	DATE:	SIGNED:	SURVEY BY:
GPR	09.04.13		
APPROVED:	DATE:	SIGNED:	SURVEY DATE:
DGN	09.04.13		

ISSUE STATUS: **AS-BUILT**

PROJECT No: 1520-132631-01
DRAWING No: 132631-2K-AB300

SCALES: 1:500 - A1
1:1000 - A3

REV: **A**